

6MP Autofocus Smart AI 40M Dual Light, Bullet PoE IP Camera with Built in MIC, SD Slot

AirCam BUDL-640MXAI-2713



6MP 3072x2048	2.7-13.5 mm Motorized AutoFocus	40M IR 35M Light	Mic Built-in	Smart AI Function	48V PoE
H.265 H.264	5x Optical Zoom	RTSP OnVif	SD Card Slot	IP67 Waterproof	Android, IOS APP Supported

Overview

Experience superior surveillance with our 6MP Autofocus AI Dual Light 40M Bullet PoE IP Camera, The AirCam BUDL-640MXAI-2713 -a state-of-the-art Smart AI surveillance solution. Achieve crystal-clear image quality with its Sony CMOS sensor technology and Autofocus technology. Benefit from powerful 35-meter Dual Light vision and 5x optical zoom, ensuring comprehensive coverage day and night. The smart Dual Light technology will save on large recording files but still offer full color images when motion is detected. Full color image during the day and IR images (up to 40m) during the night, when human/vehicle is detected the built in Light LED will turn on and full color images will be recorded of the human/vehicle that is detected. Smart AI functions; the Aircam offers many extra AI features including: Human Body & Vehicle Detection, Cross Line, Area Intrusion, Enter/Leave Area and Face Detection.

The camera also comes with a Built-in Mic, Enjoy easy installation via Power over Ethernet (PoE) for hassle-free setup and monitoring. Capture essential details effortlessly with this advanced IP camera, ensuring your security needs are met effectively.

Features

- High-Quality Imaging: Equipped with a 1/2.8" Sony CMOS sensor, delivering sharp 6MP HD resolution (3072 x 2048) output.
- Smart Dual Light, Pure Infrared, Pure White Light
- 5x Optical zoom.
- Comprehensive Image Control: Features such as Day/Night, AWB/MWB, 2D/3D-DNR, Shutter, and IR-CUT for optimal image quality.
- Image Enhancement: WDR, Mirror, Rotate, and Defogging functions to improve image clarity.
- Customizable Overlays: Supports multiple Style OSD overlays, Motion Detection, and Privacy Mask for tailored surveillance.
- Compatibility: RTSP and Onvif 23.12 compatibility for integration with various third-party NVRs.
- Efficient Encoding: H.264/H.265 dual-stream media server for efficient video encoding.
- P2P Cloud Service: Easy-to-use P2P Cloud service for remote access. *(Using ANVR)
- Security Features: User authentication and video data encryption for enhanced data protection.
- Alarm Handling: Supports Alarm Snapshot to Email and FTP for immediate event notifications.
- Versatile Access: Multiple access options including various web browsers, PC client, and mobile app for remote monitoring. *(app via ANVR)
- IEEE802.3af PoE support for convenient installation.
- Lightning Protection: Equipped with 4000V lightning protection for added durability.
- Weatherproof Design: Robust IP67-rated housing for strong water-proofing.
- Powerful IR and Light Illumination: Features 4pcs IR LEDs & Warm Light up to 40(IR), 35(Light)-meter distance.
- Motorized Lens: 2.7-13.5mm motorized lens for flexible focal adjustments.
- Alarm function: Digital Alarm in/out
- MicroSD card supported, for local recording.
- Built-in Mic.



6MP Autofocus Smart AI 40M Dual Light, Bullet PoE IP Camera with Built in MIC, SD Slot

AirCam BUDL-640MXAI-2713

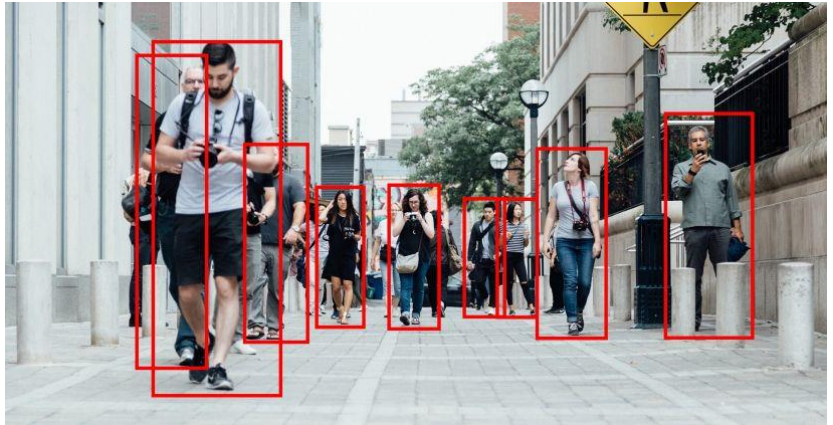
airlive®

IP Camera Smart AI feature - Smart Human/vehicle detection

Elevate your security with our AI-powered IP camera featuring advanced human and vehicle detection. This intelligent technology ensures accurate alerts, reducing false alarms. With precise identification, it enhances surveillance efficiency, making it ideal for safeguarding your premises. Stay one step ahead with smart, automated security.

Smart AI –Human Detection

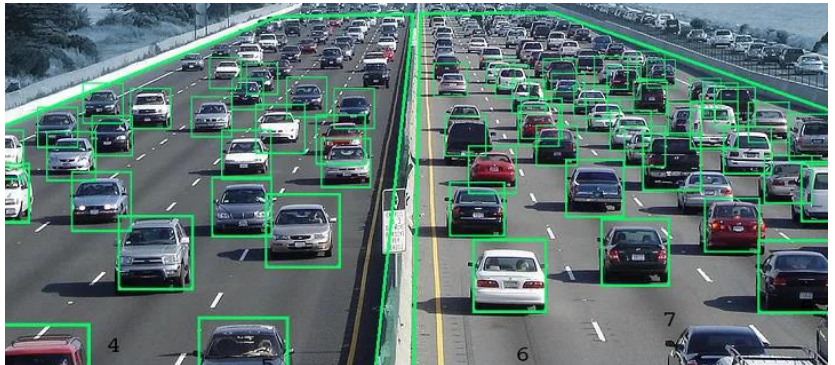
It uses advanced artificial intelligence and computer vision to identify and detect people in various scenarios, such as security, surveillance, retail, and entertainment.



Smart AI Vehicle Detection for Car and other vehicles

It's mainly to identify and detect vehicles in various scenarios, such as traffic management, parking, toll collection, and security.

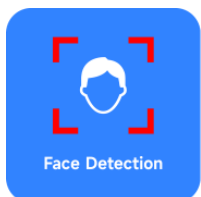
Smart AI aims to provide accurate, reliable, and efficient solutions for vehicle detection needs.



The AirLive Smart AI extra functions.

Next to the Human and Vehicle detection the camera also supports **Face, Line Crossing, Area Entry/Leaving Detection, Area Intrusion Detection.**

These AI Intelligent Detection functions for selected Detect targets, making it able to detect different targets and to keep track of selected areas the camera is focused on. Track who is coming inside the building with the Face detection or use the Line Crossing detection for extra security when people should not cross a line like on the loading dock or transportation platform. Use the Area Leaving/Entry and Intrusion detection functions. To keep a warehouse area secure or to keep track on selected outdoor area. Thus, giving you a more secure and smart security solution.



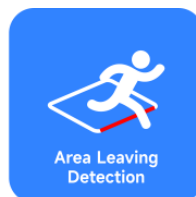
Face Detection



Human body & Vehicle detection



Line Crossing Detection



Area Leaving Detection



Area Intrusion Detection



Area Entry Detection

6MP Autofocus Smart AI 40M Dual Light, Bullet PoE IP Camera with Built in MIC, SD Slot

AirCam BUDL-640MXAI-2713

airlive®

Smart Dual Light

The AirCam BUDL-640MXAI-2713 is equipped with both IR and Warm Light LEDs. This feature makes that the camera can work in three different modes. Smart Dual Light, Pure Infrared Light and Pure White Light.

Some of the advantages of Smart Dual Light are:

Flexible Illumination Modes: These camera can switch between infrared (IR) mode for low-light environments and warm light mode for full-color video footage. This adaptability ensures optimal visibility in varying lighting conditions.

Reduced Light Pollution: The IR mode minimizes light pollution, making it ideal for residential areas or places where minimal light is preferred.

Enhanced Security: The warm light mode provides detailed color video, which is crucial for identifying details like clothing or vehicle colors. As shown in the example below.

Smart Detection: Equipped with advanced algorithms, the camera focus on human and vehicle targets, reducing false alarms triggered by irrelevant objects.

Remote Management: Users can control the camera's illumination remotely via mobile apps, offering convenience and adaptability.

Reduced NVR recording space: When video footage is recorded to the NVR 24/7, full color footage would require more storage space. With the Smart Dual Light function only the Human or Vehicle will be in full color, and all other footage in Infrared. Thus, saving on nighttime full color 24/7 recording space.

How does Smart Dual Light function:



IR LED ON

In the absence of a vehicle or person, the camera uses only IR light.



White LED ON

When a **Vehicle or Human Body** is detected, white light is automatically triggered on, resulting in color imaging and video with clear details.



IR LED ON

Once the vehicle or human leaves, the cameras switch back to IR light automatically.

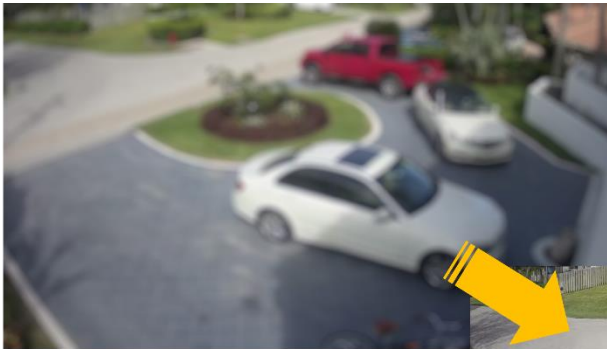
6MP Autofocus Smart AI 40M Dual Light, Bullet PoE IP Camera with Built in MIC, SD Slot

AirCam BUDL-640MXAI-2713

airlive®

2.7-13.5 mm Motorized Auto focus lens, 5x Optical Zoom

The AirCam BUDL-640MXAI-2713 is equipped with a versatile 2.7-13.5mm motorized autofocus lens. This feature ensures precise focus adjustments, allowing for sharp and clear imagery without manual intervention. Enjoy effortless control over your surveillance, capturing every detail with ease and accuracy. Zoom in onto points of interest with the 5x Optical zoom.



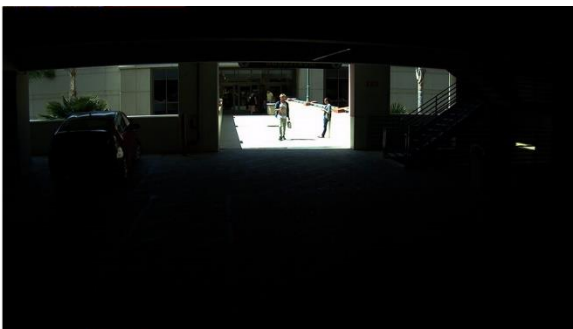
Auto Focus Lens

Get a sharp clear image

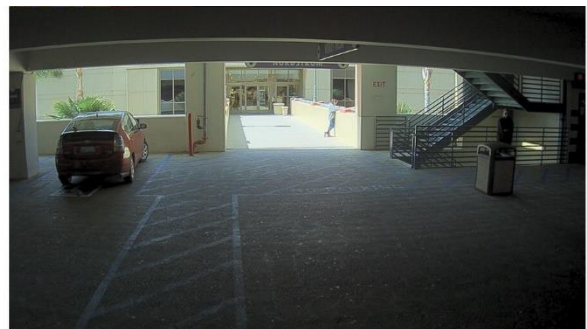


Image Enhancement: WDR, Mirror, Rotate, and Defogging functions

The AirCam BUDL-640MXAI-2713 takes image enhancement seriously, offering a suite of advanced features. Wide Dynamic Range (WDR) balances exposure, ensuring well-lit scenes in challenging lighting conditions. Additionally, it provides the ability to mirror and rotate images as needed, enhancing flexibility in surveillance placement. Furthermore, the integrated Defogging function improves visibility in misty or foggy environments, ensuring that you get clear, detailed footage regardless of adverse weather conditions. These features collectively enhance the camera's performance and its suitability for various monitoring scenarios.



WDR OFF



WDR ON

6MP Autofocus Smart AI 40M Dual Light, Bullet PoE IP Camera with Built in MIC, SD Slot

AirCam BUDL-640MXAI-2713

airlive®

AirCam BUDL-640MXAI-2713 IR LEDs with a 40-meter IR distance

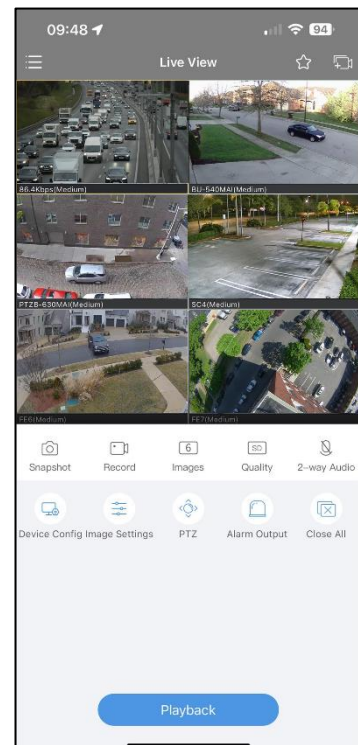
The AirCam BUDL-640MXAI-2713 is equipped with LEDs, delivering powerful infrared illumination. With an impressive up to 40-meter IR distance, it ensures exceptional night vision capabilities, providing clear and detailed surveillance footage even in complete darkness. Whether it's monitoring large outdoor areas or dimly lit spaces, this camera guarantees reliable 24/7 security coverage, making it a robust choice for various applications. This is when the Dual Light and White Light are not used.



IP Camera Android/iOS App Support App Via AirLive ANVR

Our IP Camera boasts Android and iOS app support, providing convenient access to your surveillance system. To use remote viewing via the APP, the camera must be connected to an AirLive ANVR NVR. Without the ANVR the APP will not work.

The user-friendly app, "Guard Viewer" allows you to effortlessly search and view video feeds. Stay connected and in control, monitoring your property from your mobile device with ease and convenience. Live view your camera feeds remotely, configure camera settings on-the-go, and manage PTZ (Pan-Tilt-Zoom) functionality with ease (when supported by the camera). Empower yourself with the flexibility to monitor and adjust your surveillance system from anywhere.



Model	AirCam BUDL-640MXAI-2713
Interface <ul style="list-style-type: none">• Network Interface: PoE 802.3af 1x RJ45 10M/100M• Media: Webui, AirCam64 II, Android, iOS• Onvif: 23.12 compatible (profile S G T M)• Standard: HTTP(s)/RTSP/FTP/SMTP/DHCP/NTP/DST/RTP/RTMP/P2P /HiK/IPv4/IPv6/NFS	LED <ul style="list-style-type: none">• Light: 4pcs IR LEDs & Warm Light,• Light Distance: 30~35m• IR Range: 30~40m
Camera <ul style="list-style-type: none">• Image Sensor: 1/2.8" Sony CMOS• CPU: Sigmastar• Effective Pixels: 6 Megapixels (3072(H)×2048 (V))• Exposure Shutter: Auto/Manual: 1/10s ~ 1/8000s, Max. Shutter speed adjustable• Day/Night: Auto (Active/passive/schedule)/Day/Night, switch threshold, sensitivity• Image Adjust: Brightness, Saturation, Sharpness, Contrast, Denoise (0-100%) adjustable• WDR: 100db WDR• Low Illumination: 0.01Lux• White Balance: AWB/MWB• DNR: 2D/3D DNR• Light Mode: Smart (Dual-Light) / Pure Infrared/ Pure White Light, adjustable• Light Control: Auto/Manual, Brightness level (0-100%) adjustable• Other: Day/ Night (ICR), AWB, IR-CUT• Mechanical: Waterproof IP67 Housing	Lens <ul style="list-style-type: none">• Lens Focal length: 2.7-13.5 mm Motorized Lens• Zoom: 5x Optical Zoom• FOV: 1/2.8 108.1° (W) – 30.3° (T) 56.3° (W) – 17.1° (T) 130.9° (W) – 34.8° (T), H x V x D Smart Detection <ul style="list-style-type: none">• Digital IO Alarm: 1 pair Alarm-in/Alarm-out, normally open/normally close (for the digital alarm, you can send alarm message from ANVR or App to camera directly)• Support MicroSD: Up to 512GB. (256GB is recommended)• Motion Detection: Schedule/Detection area/Trigger Recording/Trigger Snapshot/Link Blink/Upload Alarm Centre/Trigger Audio• Intelligent Detection: Human,Vehicle, Cross Line, Enter/Leaving Area, Intrusion and Face Detection.• Target Detection Type: Human Shape, Vehicle, Non-motor vehicle, Pet, Face (32px-800px)• Trigger Action Linkage: Snapshot, Record, Relay, White LED Flash, Micro-SD, Email, FTP, NAS storage,• Simultaneous Detection: Maximum 16 targets simultaneous detection• Storage Type: Schedule/Trigger: Micro-SD, Email, FTP, NAS
Encode <ul style="list-style-type: none">• Video Standard: H.265/H.264/MJPEG• Video Resolution: Main Stream: 25fps@6MP(3072x2048)/30fps@5MP(2592x1944)/4MP(2560x1440)/3MP(2304x1296)/1080P/720P Sub stream: 10fps@720P, 30fps@D1(704x576)/(720x480)/VGA(640x480)/QVGA(640x360)• Video Bitrates: Sub stream: 64kbps-8Mbps, Sub stream: 64kbps-2048kbps, VBR/CBR, Quality (1-9), GOP (1-128)• Image Rotation: 0 / 90 / 180 / 270 degree adjustable• Border Crop: X crop, Y crop• Image Mirror: Horizon / Vertical / Horizon & Vertical adjustable, Flip• OSD Overlay: Font size (1-4), Position, Time, Title, AM/PM, Color, User OSD, Alarm OSD• Privacy Mask: 4 areas• Region of Interest: ROI: Each stream support 8 areas• Audio Standard: G.711-u/G.711-a/AAC/PCM, AEC• Microphone: Built-in Mic	Multiple Language <ul style="list-style-type: none">• English, Chinese Traditional/Simplified, Russian, Deutsch, Italiano, Türkiye, Polski, Korean, Japanese, Ukrainian APP and Software Control <ul style="list-style-type: none">• Windows: Web browser, AirCam64 II• *NVR APP iOS/Android: Download "Guard Viewer" App from APP/Play Store, (can be used when camera has been added to ANVR AI.)

* Specification will be changed without prior notice

* All trademarks, logos and brand names are the property of their respective owners.

AirLive

Model	AirCam BUDL-640MXAI-2713
<div>Power Input<ul style="list-style-type: none">Power Supply: 12V DC or PoE: 802.3afPower Consumption: ≤8 WEnvironment<ul style="list-style-type: none">Operating temperature: -20°C ~ +60°COperating Humidity: 10% ~ 90% (non-condensing)Standard package of Camera<ul style="list-style-type: none">Product size: Φ81 (Inside) x 275.1 x Φ76 (Base) (L), include. BracketPackage size: 30.0 x 10.9 x 10.9cm(L*W*H)Package Weight: N.W: 0.75kg G.W: 0.75kgPackage content: IP Camera/Network cable/QIG/waterproof connectorStandard carton package<ul style="list-style-type: none">Quantity: 18pcs / 1 cartonDimensions 62.5 x 36.0 x 36.0cm (L*W*H)Weight 22.0kg (G.W)Ordering Information<ul style="list-style-type: none">Model: AirLive BUDL-640MXAI-2713Name: 6MP Autofocus Smart AI 40M Dual Light, Bullet PoE IP Camera</div>	

* Specification will be changed without prior notice

* All trademarks, logos and brand names are the property of their respective owners.

AirLive